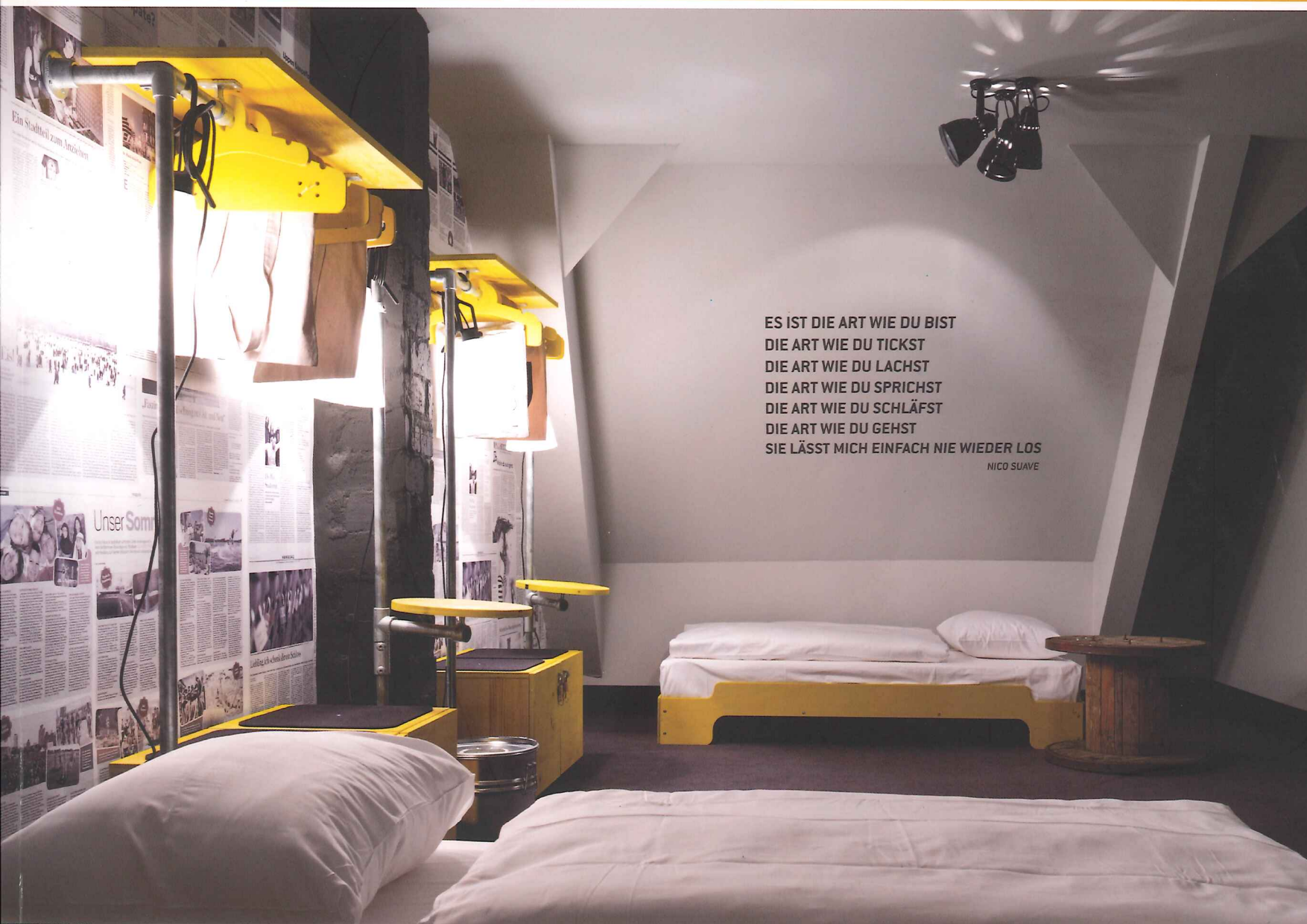


sleep

HOTEL DESIGN, DEVELOPMENT & ARCHITECTURE

www.sleepmagazine.com

ISSUE 45 NOVEMBER / DECEMBER 2012



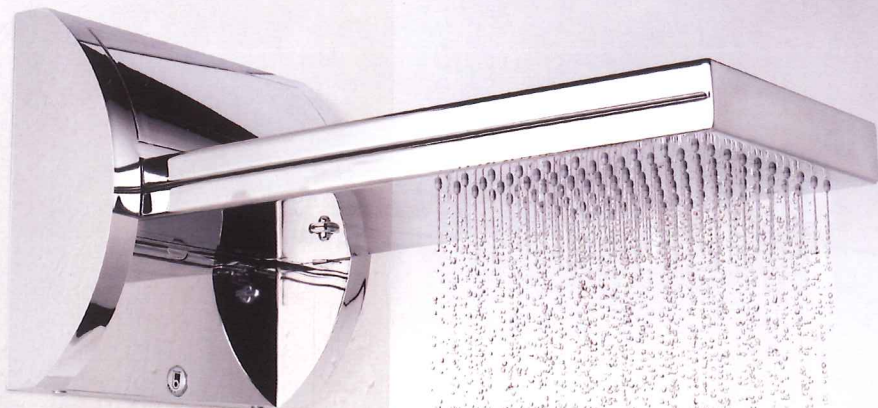
ES IST DIE ART WIE DU BIST
DIE ART WIE DU TICKST
DIE ART WIE DU LACHST
DIE ART WIE DU SPRICHST
DIE ART WIE DU SCHLÄFST
DIE ART WIE DU GEHST
SIE LÄSST MICH EINFACH NIE WIEDER LOS
NICO SUAVE

SUPERBUDE
A HARBOUR INSPIRED
HOSTEL IN HAMBURG

SOUTH PLACE
A SQUARE MILE HOTEL
WITH SOUL FROM D&D

FAZENDA NOVA
A RURAL RETREAT IN
THE EASTERN ALGARVE

SONG SAA - CAMBODIA • HILTON WORLDWIDE DESIGN TEAM • THE MAGDALEN CHAPTER - EXETER



AQUAVOLO®

Showering becomes a
two sided pleasure...



Waterfall



Bossini presents its futuristic shower head AQUAVOLO®, a rotating panel which offers two functions from this unique, patented concept. In the horizontal position experience water in its natural form; as a wide rain shower through Easy-Clean silicone nozzles or push into the vertical position for an exhilarating waterfall massage. Aquavolo benefits from an integrated diverter which changes the water flow when the head is placed into the required position of tropical rain or waterfall.



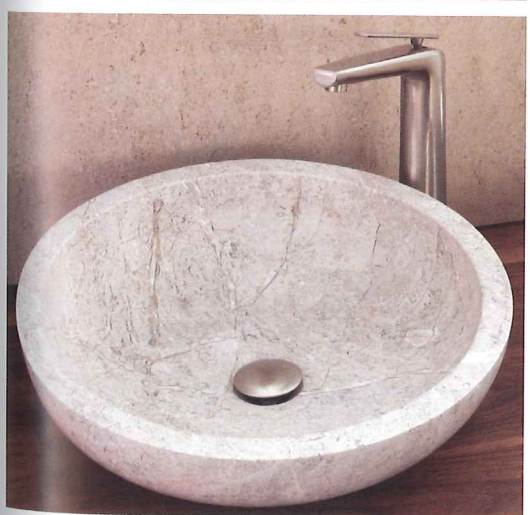
BOSSINI UK
Tel: +44 (0)1785 811836
Fax: +44 (0)1785 811837
www.bossini.co.uk
info@bossini.co.uk

BOSSINI
HIGH QUALITY SHOWER SYSTEMS



BAGNODESIGN

LONDON



VISIT US at the Sleep Event - Stand Number G25

SUPPLY CHAIN PARTNERS FOR UK, MIDDLE EAST, AFRICA, CENTRAL ASIA & OCEANIA

LONDON • DUBAI • ABU DHABI • DOHA • RIYADH • JEDDAH • MUSCAT • BAKU • TBILISI • NAIROBI • AUCKLAND • COLOMBO

31 PEAR TREE STREET, CLERKENWELL, LONDON, EC1V 3AG, UNITED KINGDOM TEL: +44 (0) 20 7553 6999
e: info@bagnodesign.co.uk www.bagnodesign.co.uk





BAGNO DESIGN LONDON SHOWROOM

Bagno Design, a subsidiary of the Dubai-based Sanipex Group, has unveiled its first ever facility in the UK with a stunning new A&D centre in London. Strategically located in Clerkenwell at the heart of London's design district, the new 4,200ft² bathroom showroom presents a 'toolkit' for architects, designers and other professional specifiers working on a wide range of international projects. In addition to Bagno Design's own inspirational product range, there are complementary products from a selection of handpicked strategic partners including Apaiser, Aqata, Vado and Vogue. Also on display are Bagno Design's recently launched stone, porcelain, marble and ceramic basin ranges. The stone basins are highly durable and available in a variety of shapes and sizes.

Tel: +44 (0) 20 7553 6999
www.bagnodesign.co.uk



TOP FLOOR EVERY STONE

Top Floor has introduced new rugs for Autumn/Winter 2012 designed by the award-winning Esti Barnes. Using intricate techniques including colour gradation and sculpting, each rug is a study in surface design. Every Stone, a highlight of the new additions, brings to life a scattering of stones using delicate shading to create three-dimensional organic shapes. All designs are made to order and can be woven to almost any dimension and colourway with a choice of hundreds of shades of silk or wool.

Tel: +44 (0)20 7795 3333
www.topfloorrugs.com



PEDRALI GLISS WOOD

Designed by Claudio Dondoli and Marco Pocci, Gliss Wood features ash legs and a natural shell in super-strong injection moulded tecnopolymer or polycarbonate. The ash wood can be bleached or black stained, the tecnopolymer can be white or sand, while the polycarbonate version is available in a range of colours.

Tel: +39 035 8358840
www.pedrali.it