

Codice - Code:

H70595H
COSMO Ø230 SHOWER HEAD
WITH SHOWER ARM

Descrizione - Description:

Soffione COSMO Ø230 mm in ottone con braccio doccia orizzontale 350 mm 1/2"MM
 Ø230 mm COSMO brass shower head with horizontal shower arm 350 mm 1/2"MM
 COSMO Kopfbrause Ø230 mm aus Messing mit horizontalem 350 mm 1/2" a.G./ a.G. Duscharm
 Pomme de douche COSMO Ø230 mm en laiton avec bras mural 350 mm 1/2"MM horizontal
 Rociador COSMO Ø230 mm en latón con brazo mural 350 mm 1/2"MM horizontal
 Душевая лейка COSMO Ø230 mm из латуни с держателем 350 mm 1/2"MM горизонтальным

Tecnologia - Technology:



Immagine Prodotto - Product Image



Disegni - Drawings

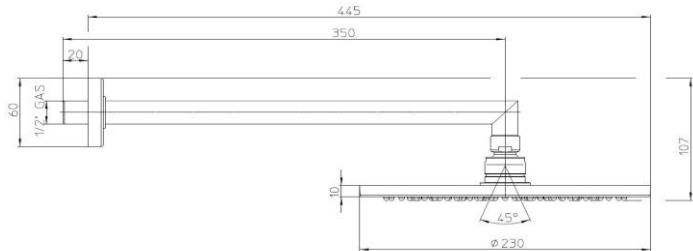
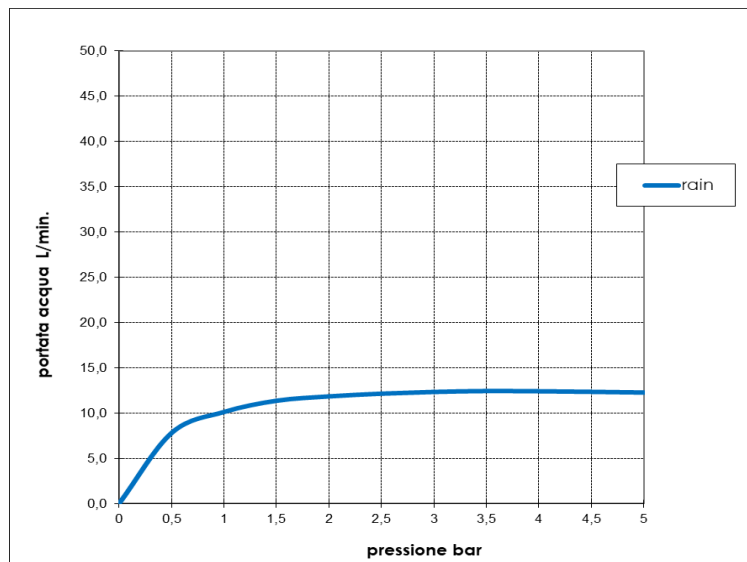


Grafico di portata - Flow rate diagram

	rain
0	0,0
0,5	7,8
1	10,1
1,5	11,4
2	11,8
2,5	12,1
3	12,3
3,5	12,4
4	12,4
4,5	12,3
5	12,3
pressione bar	portata L/min



Caratteristiche idrauliche - Hydraulic features

	Pressione Pressure	Portata Flow rate
min	1 bar	10 L/min
max	5 bar	12 L/min
Portata minima consigliata per buon funzionamento Recommended minimum flow-rate for optimal performance		7 L/min

Solo per miscelatori termostatici Only for thermostatic mixers	
Blocco di sicurezza Safety lock	--
Temperatura acqua fredda Cold water temperature	--
Temperatura acqua calda Hot water temperature	--

Materiali - Materials

Braccio H70000H: Ottone

Rosone: Ottone

Soffione I00595: Corpo in ottone e diffusore in silicone

Shower arm H70000H: Brass

Wall rosette: Brass

Showerhead I00595: Brass body and silicone diffuser

Certificazioni - Certifications

Conformità' - Conformity

EN 1112; Chrome plating - EN 248

	SCHEDA TECNICA TECHNICAL SHEET	Date: 8/11/2018	Rev/0

Codice / Code: C54001	Descrizione / description : Duplex doccia Zen con supporto incasso attacco conico girevole e flessibile ottone doppia aggraffatura cm 150. <i>Zen shower set with supply elbow w/shower hook and double interlock brass hose cm 150.</i>
--	---


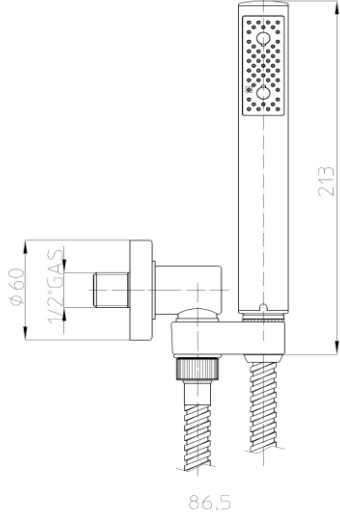
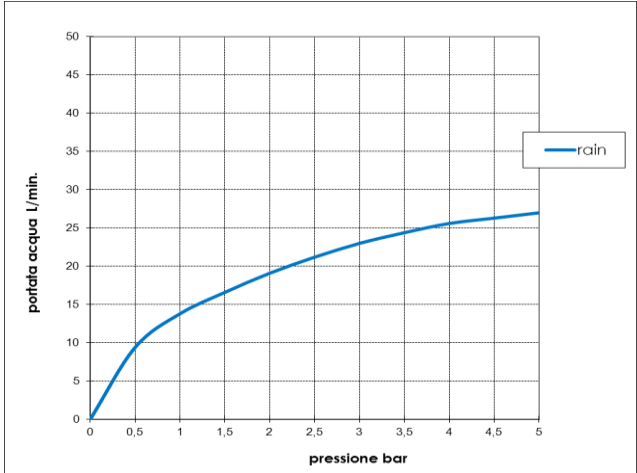
Foto / image 	Disegni / drawings 
--	---

Grafico di portata / Flow rate diagram																											
<table border="1"> <thead> <tr> <th></th> <th>rain</th> </tr> </thead> <tbody> <tr><td>0</td><td>0</td></tr> <tr><td>0,5</td><td>9,4</td></tr> <tr><td>1</td><td>13,8</td></tr> <tr><td>1,5</td><td>16,6</td></tr> <tr><td>2</td><td>19,1</td></tr> <tr><td>2,5</td><td>21,2</td></tr> <tr><td>3</td><td>23</td></tr> <tr><td>3,5</td><td>24,4</td></tr> <tr><td>4</td><td>25,6</td></tr> <tr><td>4,5</td><td>26,3</td></tr> <tr><td>5</td><td>27</td></tr> <tr> <td>pressione bar</td> <td>portata L/min</td> </tr> </tbody> </table>		rain	0	0	0,5	9,4	1	13,8	1,5	16,6	2	19,1	2,5	21,2	3	23	3,5	24,4	4	25,6	4,5	26,3	5	27	pressione bar	portata L/min	
	rain																										
0	0																										
0,5	9,4																										
1	13,8																										
1,5	16,6																										
2	19,1																										
2,5	21,2																										
3	23																										
3,5	24,4																										
4	25,6																										
4,5	26,3																										
5	27																										
pressione bar	portata L/min																										

MATERIALI / materials
Supporto C54000: Ottone; Doccia B00250: Ottone, Plastica (ABS, POM, Nylon), Silicone; Flessibile A03045: Ottone, Gomma, PVC;
Supply elbow w/shower hook C54000: Brass; Handshower B00250: Brass, Plastic (ABS, POM, Nylon), Silicone; Hose A03045: Brass, Rubber, PVC;

CARATTERISTICHE IDRAULICHE / hydraulic features					
	pressione pressure	portata flow rate	temperatura temperature	<i>solo per miscelatori termostatici</i> <i>only for thermostatic mixers</i>	
min	1 bar	/	/	Blocco di sicurezza safety lock	/
max	5 bar	/	<70°C	Temperatura acqua fredda cold water temperature	/
consigliata recommended	2-3 bar	5 L/min	/	Temperatura acqua calda hot water temperature	/

CERTIFICAZIONI / CERTIFICATIONS: Handshower B00250 ACS (France), CSA, IAPMO[ASME A112.18.1/CSA B125.1](CAN/USA), NF [EN 1112] (FRA), Watermark [AS/NZS 3662:2005] (AUS); Hose A03045: ACS (France), NF [EN 1113] (FRA);

CONFORMITA' / CONFORMITY . Chrome plating - EN 248
--



Codice - Code:

Z00005+Z00006

Concealed part for single lever mixer with external OKI round parts

Descrizione - Description:

Parti incasso miscelatore monocomando con deviatore 2 VIE, attacchi da 1/2" e da 3/4" con parti esterne OKI tonde

Concealed parts for single lever mixer with 2-WAYS diverter, 1/2" and 3/4" connections with OKI round external parts

Tecnologia - Technology:



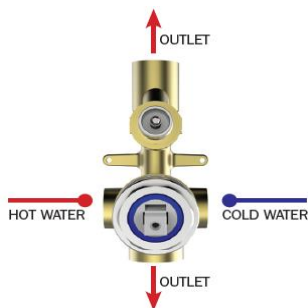
Unterputz-Einbaukörper für Einhebelbatterie mit 2-WEGE Umsteller, 1/2" und 3/4" Anschlüsse mit OKI runden Aufputzteile

Parties à encastrer pour mitigeur mécanique avec inverseur 2 VOIES, connexions 1/2" et 3/4" avec parties externes OKI rondes

Partes de empotrado para monomando con desviador de 2 VIAS, conexiones 1/2" y 3/4" con partes externas OKI redondas

Смеситель механический встраиваемый с девиатором 1 направления 1/2" и 3/4" с участием Детали наружныеДетали наружные OKI круглый

Immagine Prodotto - Product Image



Z00005



Z00006

Disegni - Drawings

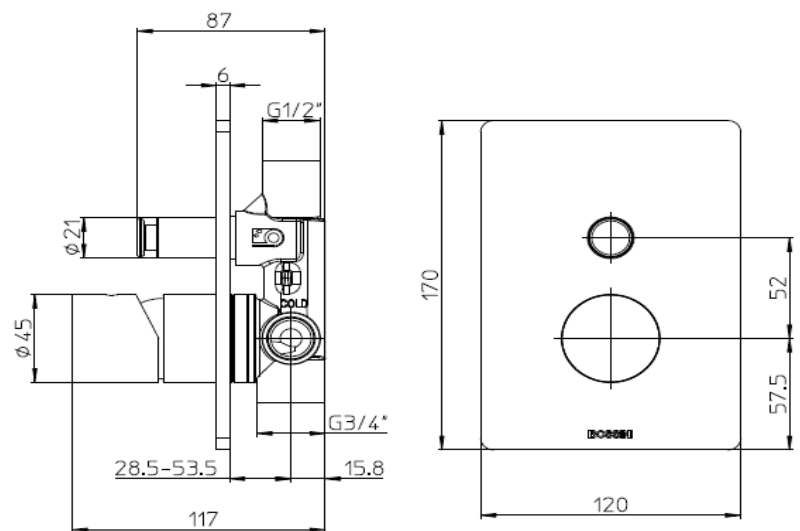
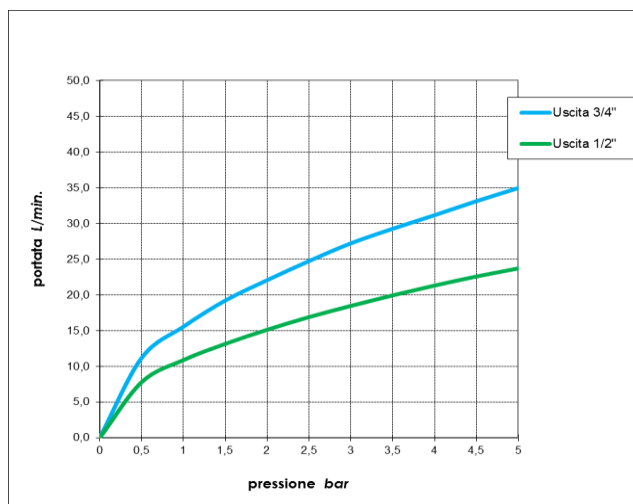


Grafico di portata - Flow rate diagram

	Uscita 3/4"	Uscita 1/2"
0	0,0	0,0
0,5	11,2	7,8
1	15,6	10,9
1,5	19,2	13,2
2	22,1	15,1
2,5	24,7	16,9
3	27,2	18,5
3,5	29,3	19,9
4	31,2	21,3
4,5	33,1	22,6
5	35,0	23,7
pressione bar	portata L/min	



Caratteristiche idrauliche - Hydraulic features

	Pressione Pressure	Portata Flow rate	Solo per miscelatori termostatici Only for thermostatic mixers	
min	1 bar	10,9 L/min	Blocco di sicurezza Safety lock	--
max	5 bar	35 L/min	Temperatura acqua fredda Cold water temperature	--
Portata minima consigliata per buon funzionamento Recommended minimum flow-rate for optimal performance		--	Temperatura acqua calda Hot water temperature	--

Materiali - Materials

Parte incasso Z00005: Ottone
Parti esterne Z00006: Ottone e Zama
Concealed parts Z00005: Brass
External parts Z00006: Brass and Zama alloy

Certificazioni - Certifications

Conformità - Conformity

UNI EN 817