



# BOSSINI

HIGH QUALITY SHOWER SYSTEMS

## SCHEDA TECNICA - TECHNICAL SHEET

16/03/2023

Rev: 0

### Codice - Code:

**C17003**

Shower set CLASSIC/3

### Descrizione - Description:

Duplex doccia CLASSIC/3 Ø110 con supporto ad incasso, attacco conico girevole e flessibile cm 150

*CLASSIC/3 Ø110 shower set with supply elbow, swivel hook and hose cm 150*

*Brauseset CLASSIC/3 Ø110 mit Wandanschlussbogen, schwenkbarem Brausehalter und Schlauch cm 150*

### Tecnologia - Technology:



*Ensemble de douche CLASSIC/3 Ø110 avec sortie murale, support orientable et flexible cm 150*

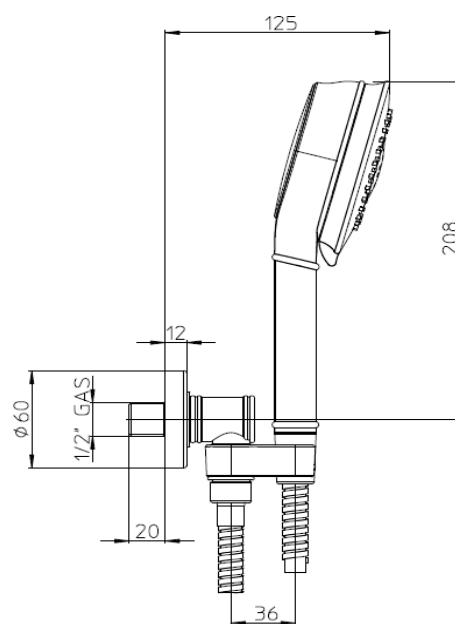
*Conjunto de ducha CLASSIC/3 Ø110 con toma de agua, soporte orientable y flexible cm 150*

*Комплект душевой лейки CLASSIC/3 Ø110 и встраиваемого держателя с поворотным конусообразным соединением и шлангом 150 см*

### Immagine Prodotto - Product Image

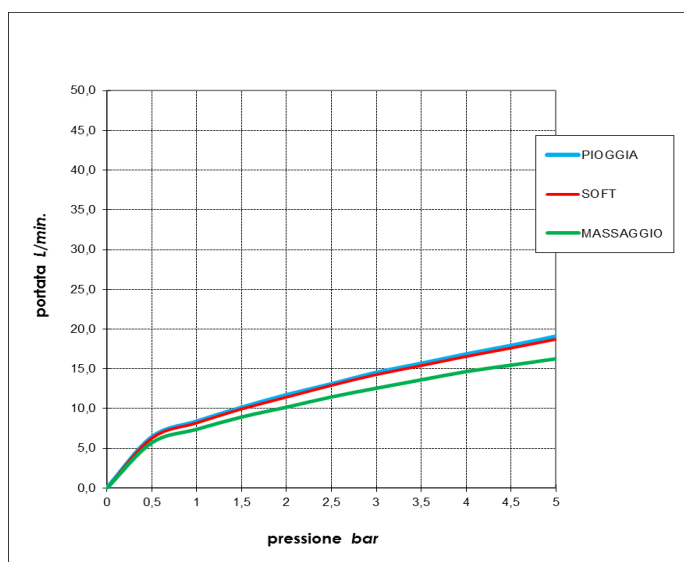





### Disegni - Drawings



### Grafico di portata - Flow rate diagram

|               | PIOGGIA       | SOFT | MASSAGGIO |
|---------------|---------------|------|-----------|
| 0             | 0,0           | 0,0  | 0,0       |
| 0,5           | 6,4           | 6,3  | 5,7       |
| 1             | 8,4           | 8,2  | 7,4       |
| 1,5           | 10,1          | 9,9  | 9,0       |
| 2             | 11,7          | 11,4 | 10,2      |
| 2,5           | 13,1          | 12,9 | 11,5      |
| 3             | 14,5          | 14,3 | 12,6      |
| 3,5           | 15,6          | 15,4 | 13,7      |
| 4             | 16,8          | 16,6 | 14,7      |
| 4,5           | 17,9          | 17,6 | 15,5      |
| 5             | 19,1          | 18,7 | 16,3      |
| pressione bar | portata L/min |      |           |



|  |                       |  |   |
|--|-----------------------|--|---|
| SCHEDA TECNICA - TECHNICAL SHEET   |                       | 16/03/2023   | Rev: 0  |
| Caratteristiche idrauliche - Hydraulic features  |                       |  |   |
|  | Pressione<br>Pressure | Portata<br>Flow rate   | Solo per miscelatori termostatici<br>Only for thermostatic mixers |
| min  | 1 bar                 | 7,4 L/min  | Blocco di sicurezza<br>Safety lock                                |
| max  | 5 bar                 | 19,1 L/min   | Temperatura acqua fredda<br>Cold water temperature                |
| Portata minima consigliata per buon funzionamento<br>Recommended minimum flow-rate for optimal performance   |                       | 5 L/min  | Temperatura acqua calda<br>Hot water temperature                  |
| Materiali - Materials  |                       | Certificazioni - Certifications  |   |
| <b>Doccia B00191:</b> Corpo ABS, ugelli silicone<br><b>Supporto e presa acqua:</b> Ottone<br><b>Guarnizioni:</b> NBR<br><br><i>Handshower B00191 : ABS body and silicone nozzles</i><br><i>Shower hook and supply connection : Brass</i><br><i>Gaskets : NBR</i> |                       | <b>B00191:</b><br><br>   |   |
| Conformità' - Conformity   |                       |  |   |
| <b>Chrome plating</b> - EN248;   |                       |  |   |
|  |                       |  |   |
| info@bossini.it  |                       | www.bossini.it   |   |