



SCHEDA TECNICA - TECHNICAL SHEET

09/01/2024

Rev: 1

Codice - Code:

Z00504

External parts APICE with single back plate for concealed single lever 1 way mixer

Descrizione - Description:

Parti esterne APICE per miscelatore monocomando 1 via da incasso

APICE external parts for single lever 1 way mixer

Aufputzteile für APICE Einhebel-Brausebatterie mit 1 Wasserausgang

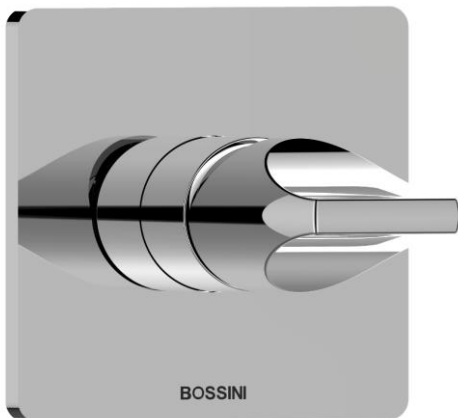
Pièces externes APICE pour mitigeur monocommande 1 sortie

Partes externas APICE para mezclador lavabo monomando 1 via de empotrado

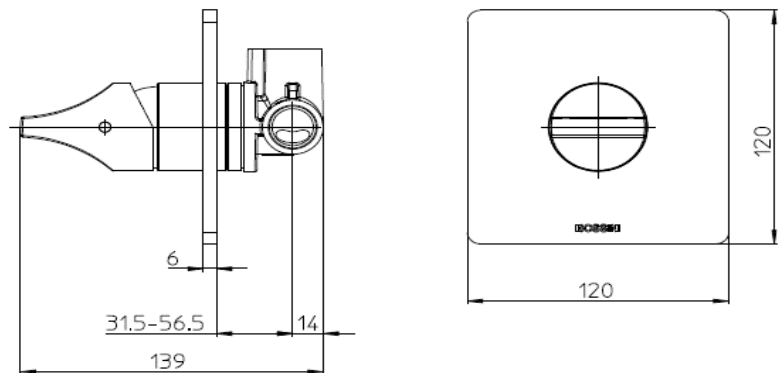
Наружная монорычажного смесителя APICE на 1 ВЫХОД

Tecnologia - Technology:

Immagine Prodotto - Product Image



Disegni - Drawings



Concealed part (Z00007) supplied separately

Grafico di portata - Flow rate diagram

Caratteristiche idrauliche - Hydraulic features

	Pressione Pressure	Portata Flow rate	Solo per miscelatori termostatici Only for thermostatic mixers	
min	1 bar	--	Blocco di sicurezza Safety lock	--
max	5 bar	--	Temperatura acqua fredda Cold water temperature	--
Portata minima consigliata per buon funzionamento <i>Recommended minimum flow-rate for optimal performace</i>		--	Temperatura acqua calda Hot water temperature	--

Materiali - Materials

Piastra e manopole: Lega di Zama

Cannotti: Ottone

Plate and handles: Zama alloy

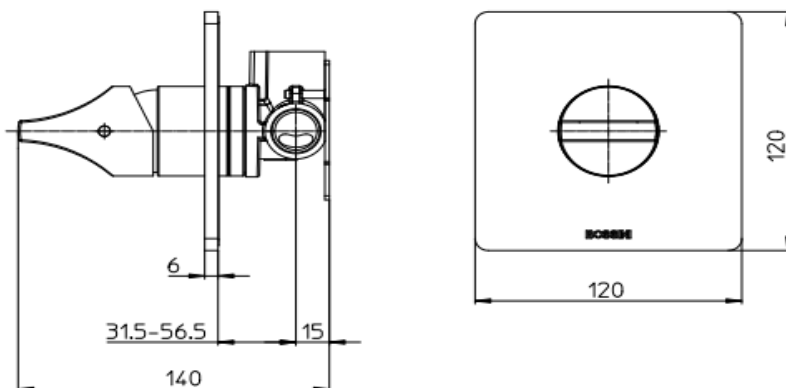
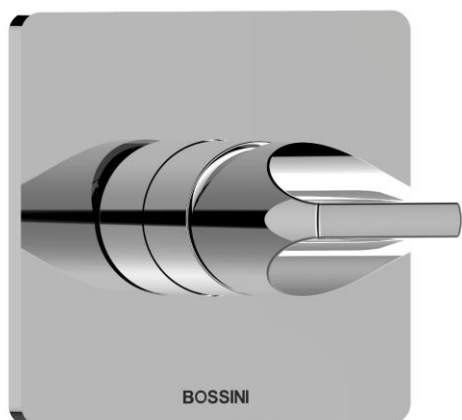
Spacers: Brass

Certificazioni - Certifications

Conformità' - Conformity

<p>Codice - Code: Z00504 External parts APICE with single back plate for concealed single lever 1 way mixer</p>	<p>Descrizione - Description: Parti esterne APICE per miscelatore monocomando 1 via da incasso <i>APICE external parts for single lever 1 way mixer</i> <i>Aufputzteile für APICE Einhebel-Brausebatterie mit 1 Wasserausgang</i> <i>Pièces externes APICE pour mitigeur monocommande 1 sortie</i> <i>Partes externas APICE para mezclador lavabo monomando 1 via de empotrado</i> <i>Наружная монорычажного смесителя APICE на 1 ВЫХОД</i></p>
<p>Tecnologia - Technology:</p>	

Immagine Prodotto - Product Image | **Disegni - Drawings**



Concealed part (Z90007) for drywall installation supplied separately

Grafico di portata - Flow rate diagram

<p>Flow rate diagram area (currently blank).</p>
--

Caratteristiche idrauliche - Hydraulic features

	Pressione Pressure	Portata Flow rate	Solo per miscelatori termostatici Only for thermostatic mixers	
min	1 bar	--	Blocco di sicurezza Safety lock	--
max	5 bar	--	Temperatura acqua fredda Cold water temperature	--
Portata minima consigliata per buon funzionamento <i>Recommended minimum flow-rate for optimal performance</i>		--	Temperatura acqua calda Hot water temperature	--

Materiali - Materials **Certificazioni - Certifications**

Piastra e manopole: Lega di Zama
Cannotti: Ottone

***Plate and handles :** Zama alloy*
***Spacers :** Brass*

Conformità' - Conformity