



Codice - Code:

Z00732

GILLO external parts with individual back plates for concealed single lever wash basin mixer

Descrizione - Description:

Parte esterna miscelatore lavabo GILLO da parete con bocca erogazione 185mm e aeratore M24x1, senza scarico

GILLO external part wall-mount washbasin mixer with 185mm spout and M24x1 aerator, without waste

Tecnologia - Technology:

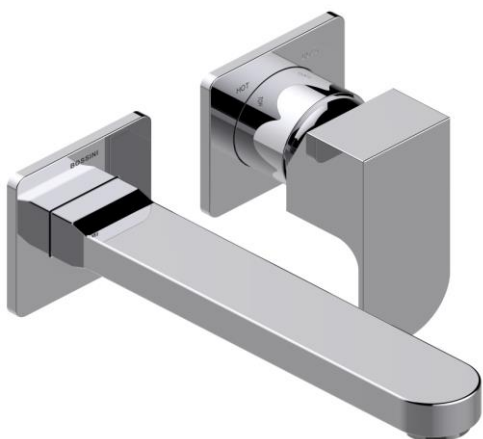
Aufputz-Teil GILLO für Wandeinbau Waschtischmischer mit Rohrauslauf 185mm und Strahlregler M18x1, ohne Auspuff

Partie externe mitigeur lavabo mural GILLO avec bec distribution 185mm et aérateur M24x1, sans décharge

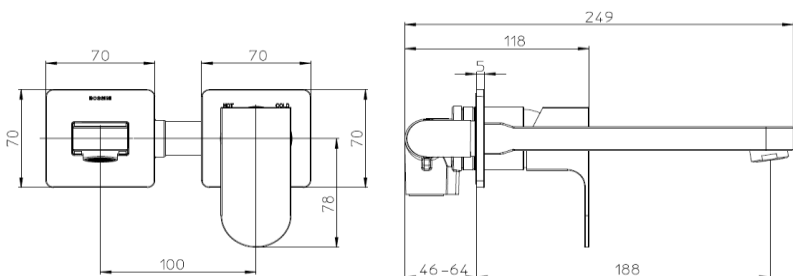
Parte externa mezclador lavabo mural GILLO con boca de erogación 185mm y aireador M24x1, sin desagüe

Наружная часть смесителя из стены GILLO для раковины с изливом 185мм и аэратором M24x1, без донного клапана

Immagine Prodotto - Product Image



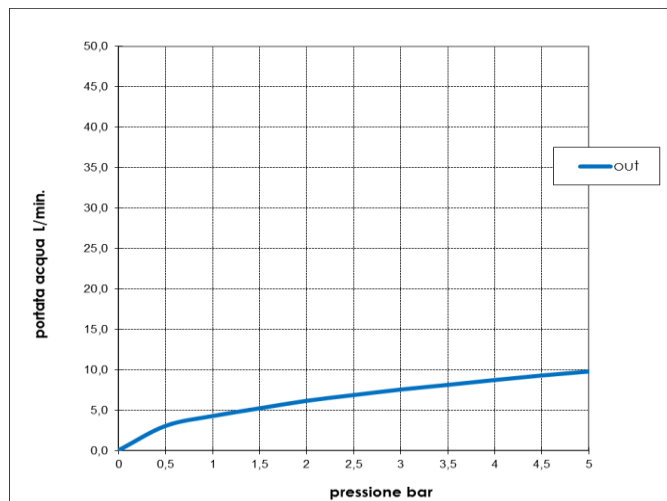
Disegni - Drawings



Concealed part (Z00801) supplied separately

Grafico di portata - Flow rate diagram

	out
0	0,0
0,5	3,0
1	4,3
1,5	5,2
2	6,1
2,5	6,9
3	7,5
3,5	8,1
4	8,7
4,5	9,3
5	9,8
pressione bar	portata L/min



Le portate indicate sono valide solo in abbinamento all'incasso Z00801, con aeratore in classe Z sulla bocca lavabo, acqua miscelata 50/50 calda e fredda

Flow rate mentioned are valid only with the concealed part Z00801, with class Z aerator on the basin spout, mixed water 50/50 hot and cold

Caratteristiche idrauliche - Hydraulic features

	Pressione Pressure	Portata Flow rate	Solo per miscelatori termostatici Only for thermostatic mixers	
min	1 bar	4,3 L/min	Blocco di sicurezza Safety lock	--
max	5 bar	9,8 L/min	Temperatura acqua fredda Cold water temperature	--
Portata minima consigliata per buon funzionamento <i>Recommended minimum flow-rate for optimal performance</i>		--	Temperatura acqua calda Hot water temperature	--

Materiali - Materials

Bocca: Ottone
Piastre e manopola: Lega di Zama
Cannotti: Ottone

Spout: Brass
Platse and handle: Zama alloy
Spacers: Brass

Certificazioni - Certifications

Conformità - Conformity



BOSSINI
HIGH QUALITY SHOWER SYSTEMS

SCHEDA TECNICA - TECHNICAL SHEET

21/03/2023

Rev: 0

Codice - Code:

Z00801

Concealed part 1 way single lever mixer with connection for wash basin and bathtub spout

Descrizione - Description:

Parti incasso miscelatore monocomando 1 via, con connessione per bocca lavabo e vasca, attacchi da 1/2" - Ottone grezzo

Concealed parts for single lever mixer 1 way, with connection for wash basin and bathtub spout, 1/2" connections - Raw brass

Tecnologia - Technology:

Unterputz-Einbaukörper für Einhebelbatterie mit Verbindung für Waschbeckenauslauf und Badewanne, 1/2" iG Anschlüsse - Rohmessing

Parties à encastrer pour mitigeur mécanique 1 voie, avec connexion pour bec lavabo et baignoire, connexions 1/2" – Laiton Brut

Partes empotradas para mezclador monocomando 1 vía, con conexión por caño para lavabo y bañera - Conexiones 1/2" - Latón Bruto

Встраиваемые части Смесители однорычажные 1 выхода, с подключением к водоснабжению для излива раковины и ванны, соединение на 1/2" - Латунь неочищенная

Immagine Prodotto - Product Image



Disegni - Drawings

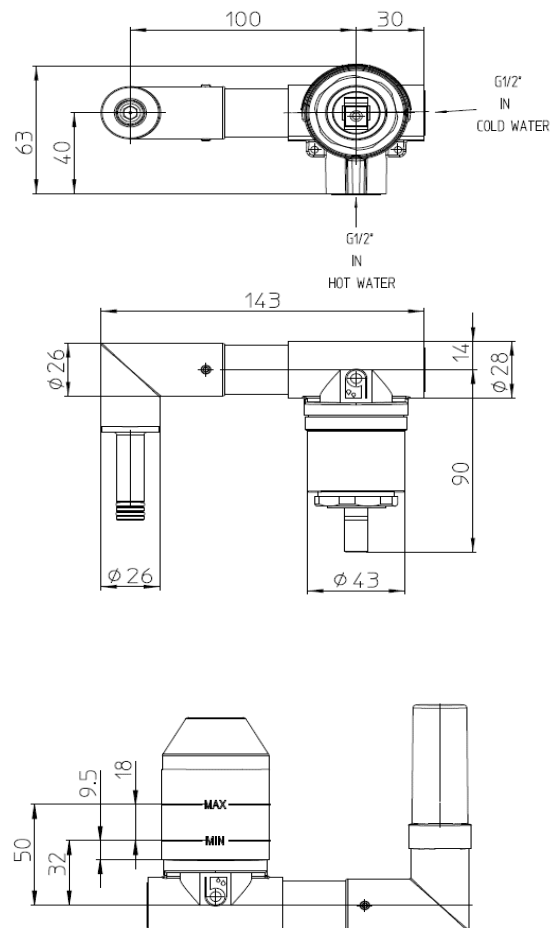
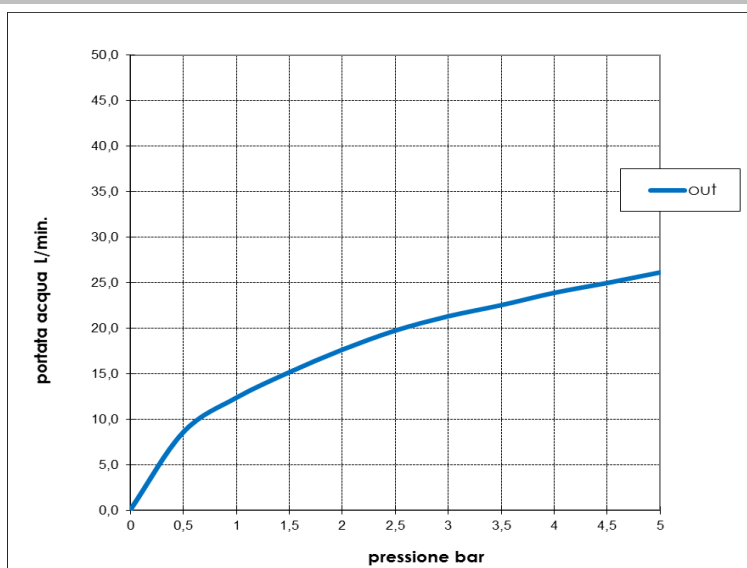


Grafico di portata - Flow rate diagram

	out
0	0,0
0,5	8,6
1	12,3
1,5	15,2
2	17,6
2,5	19,7
3	21,3
3,5	22,5
4	23,9
4,5	25,0
5	26,1
pressione bar	portata L/min



Caratteristiche idrauliche - Hydraulic features

	Pressione Pressure	Portata Flow rate	Solo per miscelatori termostatici Only for thermostatic mixers	
min	1 bar	12,3 L/min	Blocco di sicurezza Safety lock	--
max	5 bar	26,1 L/min	Temperatura acqua fredda Cold water temperature	--
Portata minima consigliata per buon funzionamento Recommended minimum flow-rate for optimal performace			Temperatura acqua calda Hot water temperature	--

Materiali - Materials

Corpo gruppo monocomando, presa acqua e raccordi:
Ottone

Singler lever group body, connection for spout and fittings :
Brass

Certificazioni - Certifications

Conformità' - Conformity

Mixer - EN817