



Codice - Code:

Z90007

Concealed part for single lever mixer
1 WAY for drywall installation

Descrizione - Description:

Parti incasso miscelatore monocomando 1 VIA con piastra per installazioni in cartongesso, attacchi da 1/2"

Concealed part for single lever mixer 1 WAY with plate for drywall installation, 1/2" connections

Unterputz-Einbaukörper für Einhebelbatterie für Gipskartonplatte Einbau, 1/2" Anschluss

Tecnologia - Technology:

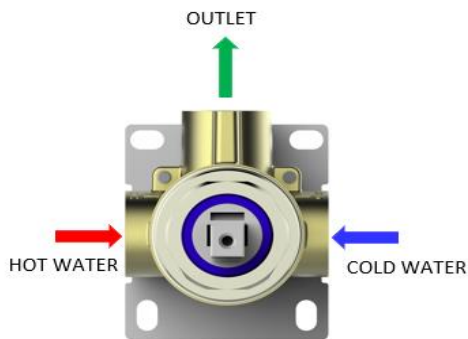


Parties à encastrer pour mitigeur mécanique 1 VOIE pour installation en plaques de plâtre, connexions 1/2"

Partes de empotrado para monomando de 1 VIA para instalación en panel de yeso, conexiones 1/2"

Смеситель механический встраиваемый с девиатором 1 направления Для установки на стену из гипсокартона, связи из 1/2"

Immagine Prodotto - Product Image



Disegni - Drawings

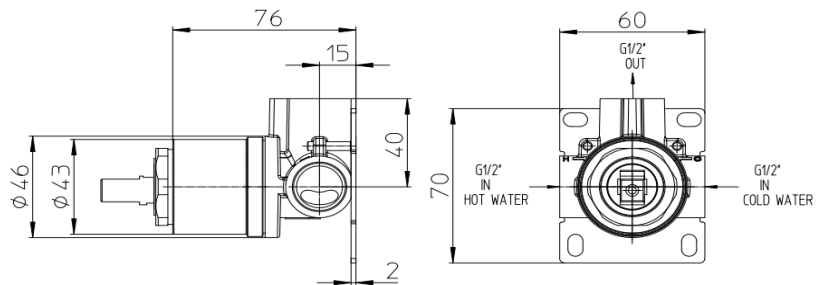
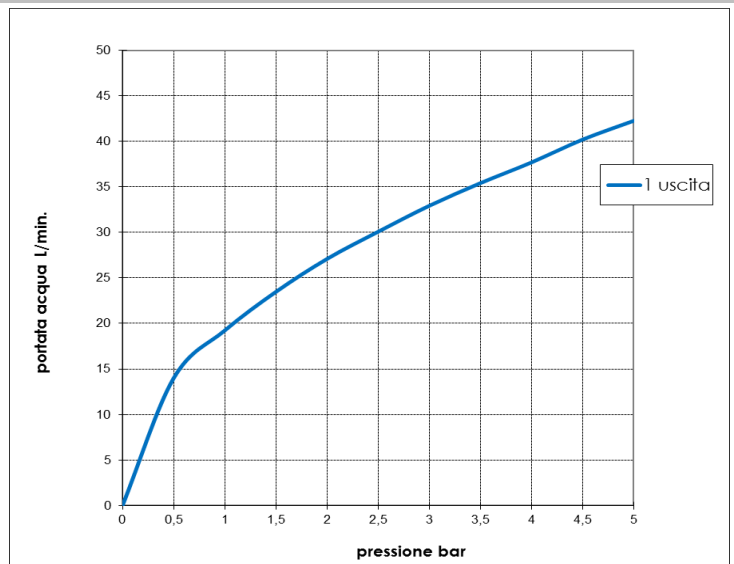


Grafico di portata - Flow rate diagram

	1 uscita
0	0
0,5	14,0
1	19,2
1,5	23,5
2	27,1
2,5	30,1
3	32,9
3,5	35,4
4	37,7
4,5	40,2
5	42,3
pressione bar	portata L/min



Caratteristiche idrauliche - Hydraulic features

	Pressione Pressure	Portata Flow rate	Solo per miscelatori termostatici Only for thermostatic mixers	
min	1 bar	19,2 L/min	Blocco di sicurezza Safety lock	--
max	5 bar	42,3 L/min	Temperatura acqua fredda Cold water temperature	--
Portata minima consigliata per buon funzionamento <i>Recommended minimum flow-rate for optimal performace</i>		--	Temperatura acqua calda Hot water temperature	--

Materiali - Materials

Corpo miscelatore: Ottone
Piastra: Acciaio inox AISI304

Concealed part body: Brass
Plate: Stainless steel AISI304

Certificazioni - Certifications

Conformità' - Conformity

EN817